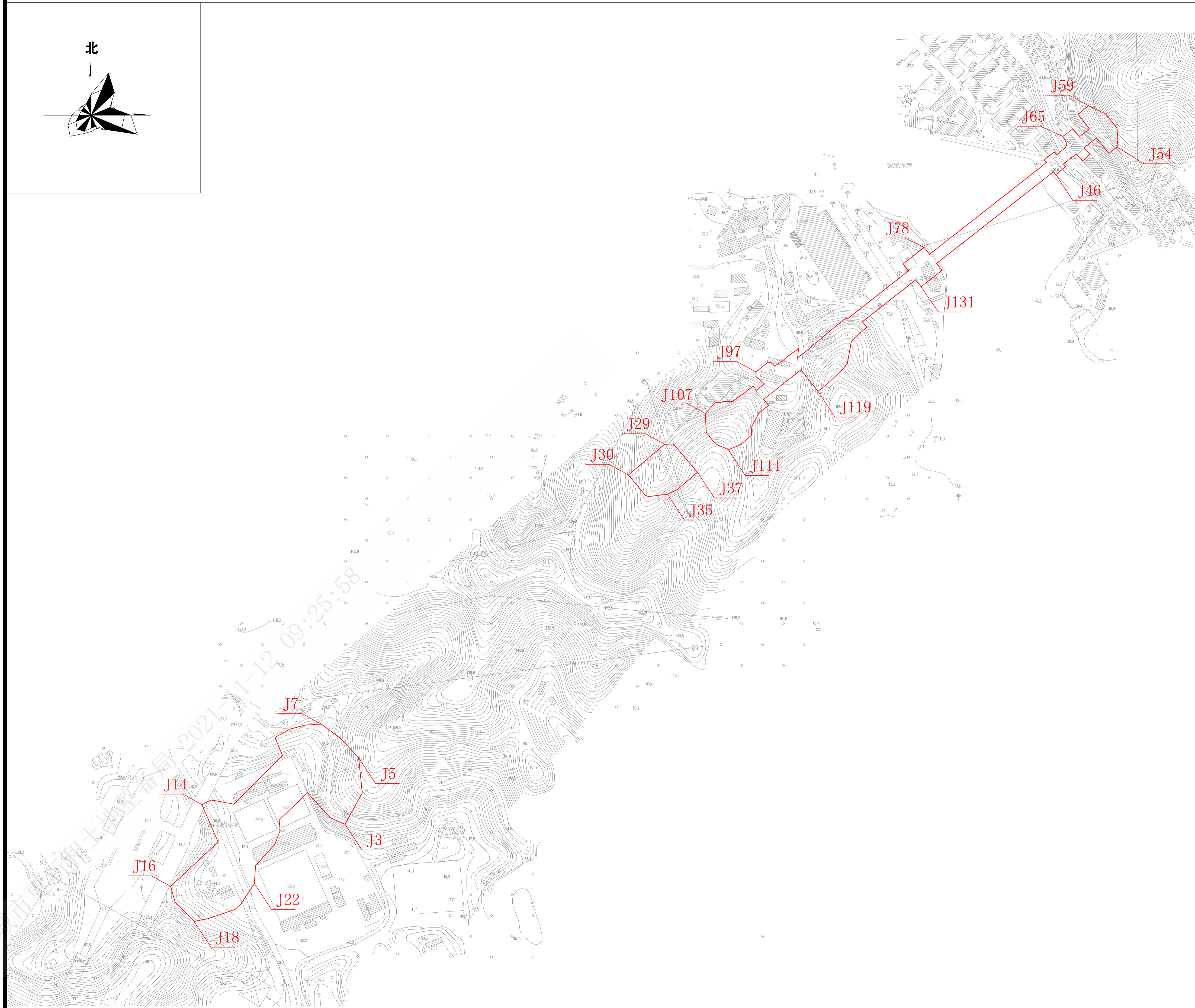
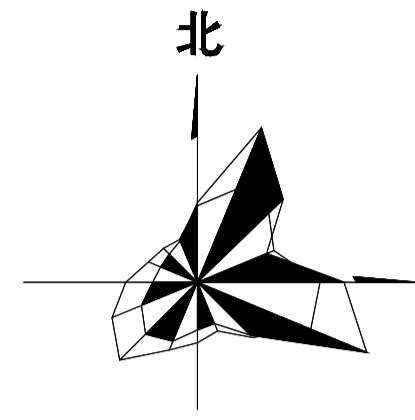


深圳至深汕合作区铁路项目（罗湖北站~坪山站区间）房屋征收范围图



点号	X	Y	点号	X	Y
J1	2500376.63	515585.38	J67	2501305.30	516675.98
J2	2500341.02	515617.64	J68	2501304.15	516674.54
J3	2500331.41	515639.22	J69	2501294.89	516662.74
J4	2500376.27	515663.98	J70	2501298.98	516659.53
J5	2500426.98	515658.86	J71	2501287.87	516645.36
J6	2500454.56	515633.40	J72	2501283.77	516648.57
J7	2500475.62	515605.00	J73	2501273.28	516635.20
J8	2500474.25	515582.23	J74	2501242.41	516595.86
J9	2500468.49	515560.37	J75	2501211.55	516556.53
J10	2500456.54	515538.48	J76	2501180.68	516517.19
J11	2500430.35	515549.16	J77	2501151.85	516480.45
J12	2500360.32	515478.93	J78	2501161.77	516472.68
J13	2500366.35	515446.96	J79	2501137.94	516442.31
J14	2500359.65	515433.41	J80	2501128.02	516450.09
J15	2500305.71	515456.64	J81	2501118.95	516438.52
J16	2500242.01	515388.28	J82	2501088.08	516399.19
J17	2500219.16	515394.69	J83	2501058.79	516361.86
J18	2500191.49	515422.00	J84	2501060.39	516360.60
J19	2500195.24	515441.46	J85	2501051.13	516348.80
J20	2500208.71	515480.75	J86	2501035.55	516329.63
J21	2500216.04	515489.03	J87	2501028.60	516322.37
J22	2500245.94	515508.87	J88	2501019.34	516310.57
J23	2500271.90	515510.41	J89	2501018.85	516310.96
J24	2500302.60	515538.39	J90	2501002.73	516290.44
J25	2500321.98	515545.80	J91	2501015.77	516291.85
J26	2500337.52	515544.53	J92	2501004.86	516275.87
J27	2500859.86	516127.89	J93	2500997.96	516268.44
J28	2500878.77	516111.84	J94	2500990.93	516257.38
J29	2500878.40	516099.29	J95	2500996.01	516252.33
J30	2500834.26	516047.09	J96	2500996.35	516247.82
J31	2500815.70	516062.45	J97	2500982.51	516230.45
J32	2500810.21	516066.96	J98	2500975.99	516230.66
J33	2500804.73	516071.47	J99	2500965.24	516242.84
J34	2500803.26	516076.45	J100	2500956.20	516231.36
J35	2500806.45	516103.23	J101	2500962.23	516226.59
J36	2500813.53	516117.75	J102	2500951.31	516212.78
J37	2500837.98	516146.49	J103	2500939.86	516196.31
J38	2501138.81	516490.69	J104	2500940.13	516184.39
J39	2501167.64	516527.43	J105	2500938.01	516178.83
J40	2501198.50	516566.76	J106	2500938.85	516172.70
J41	2501229.37	516606.10	J107	2500922.73	516157.86
J42	2501260.24	516645.43	J108	2500895.56	516159.06
J43	2501270.73	516658.81	J109	2500889.05	516164.23
J44	2501266.64	516662.02	J110	2500879.34	516171.94
J45	2501277.75	516676.18	J111	2500870.61	516190.74
J46	2501281.84	516672.97	J112	2500877.19	516207.60
J47	2501291.09	516684.78	J113	2500890.92	516223.68
J48	2501296.20	516691.30	J114	2500904.08	516224.70
J49	2501286.18	516700.56	J115	2500923.35	516234.92
J50	2501295.88	516711.03	J116	2500934.25	516248.71
J51	2501305.03	516702.56	J117	2500943.18	516241.65
J52	2501319.30	516720.74	J118	2500985.53	516295.54
J53	2501297.11	516738.14	J119	2500954.62	516319.84
J54	2501306.37	516749.95	J120	2500963.88	516331.62
J55	2501316.86	516751.30	J121	2500967.20	516335.37
J56	2501333.16	516750.09	J122	2500986.34	516355.54
J57	2501343.40	516742.06	J123	2500994.32	516361.98
J58	2501353.62	516734.04	J124	2501026.71	516367.96
J59	2501365.63	516709.15	J125	2501037.29	516378.48
J60	2501362.78	516705.68	J126	2501046.55	516390.28
J61	2501353.52	516693.88	J127	2501054.87	516383.75
J62	2501332.36	516710.49	J128	2501075.02	516409.43
J63	2501321.45	516696.59	J129	2501105.89	516448.77
J64	2501332.17	516686.61	J130	2501114.97	516460.33
J65	2501321.60	516672.11	J131	2501105.05	516468.11
J66	2501310.71	516678.27	J132	2501128.88	516498.48